



DOSTI
FRIENDS FOR LIFE

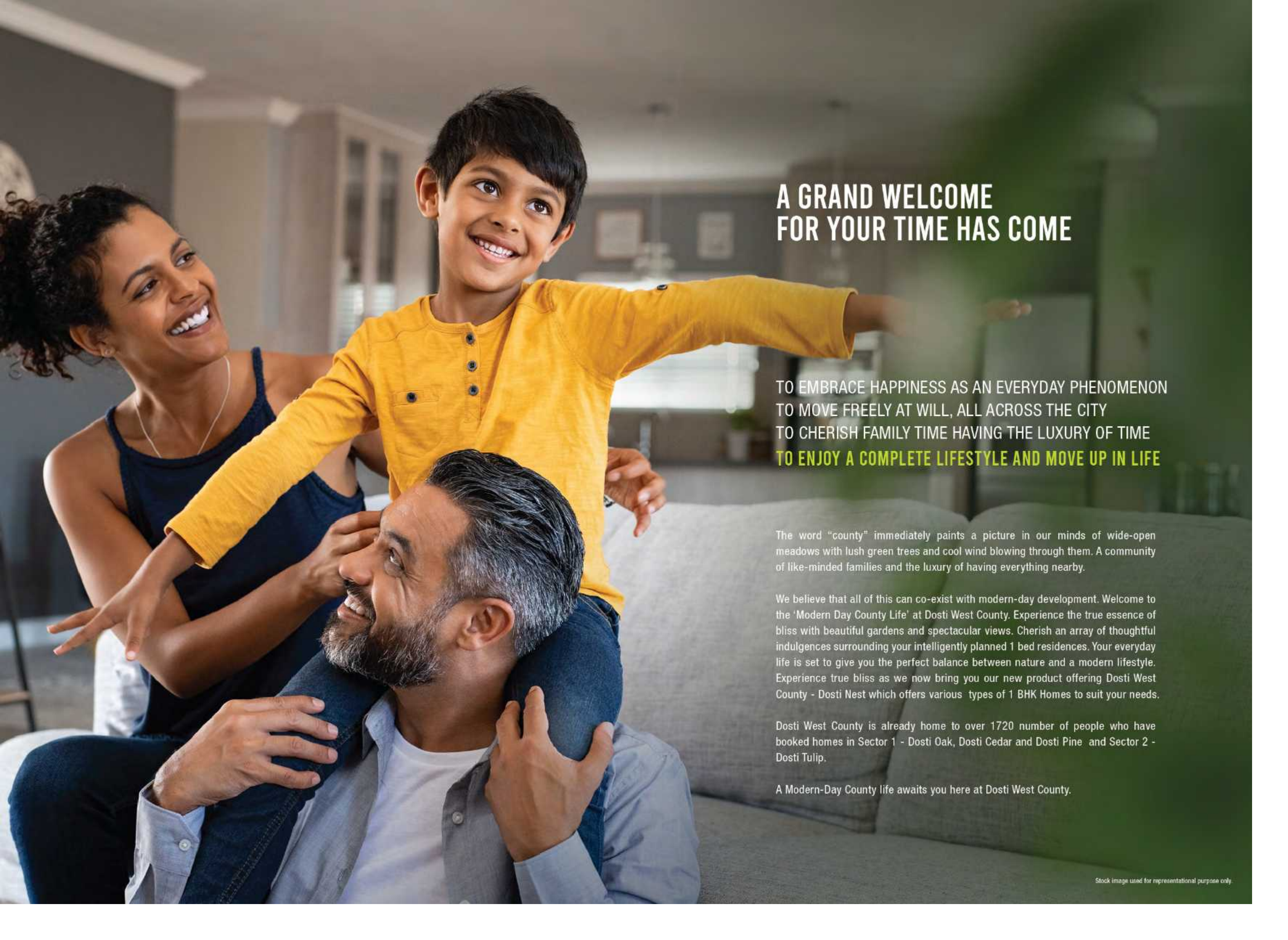


DOSTI
NEST

MOVE UP IN LIFE WITH 1BHK HOMES



Stock image used for representational purpose only.



A GRAND WELCOME FOR YOUR TIME HAS COME

TO EMBRACE HAPPINESS AS AN EVERYDAY PHENOMENON
TO MOVE FREELY AT WILL, ALL ACROSS THE CITY
TO CHERISH FAMILY TIME HAVING THE LUXURY OF TIME
TO ENJOY A COMPLETE LIFESTYLE AND MOVE UP IN LIFE

The word "county" immediately paints a picture in our minds of wide-open meadows with lush green trees and cool wind blowing through them. A community of like-minded families and the luxury of having everything nearby.

We believe that all of this can co-exist with modern-day development. Welcome to the 'Modern Day County Life' at Dosti West County. Experience the true essence of bliss with beautiful gardens and spectacular views. Cherish an array of thoughtful indulgences surrounding your intelligently planned 1 bed residences. Your everyday life is set to give you the perfect balance between nature and a modern lifestyle. Experience true bliss as we now bring you our new product offering Dosti West County - Dosti Nest which offers various types of 1 BHK Homes to suit your needs.

Dosti West County is already home to over 1720 number of people who have booked homes in Sector 1 - Dosti Oak, Dosti Cedar and Dosti Pine and Sector 2 - Dosti Tulip.

A Modern-Day County life awaits you here at Dosti West County.

THE IDEAL DESTINATION FOR EVERYTHING

Thane, the crowning glory of Mumbai, is the city of well-preserved lakes which withholds nature's pristine bounties. Rapid development and exemplary infrastructure has made Thane the most sought-after future-ready city on the global map. Being easily accessible to prominent destinations of work, leisure and entertainment, makes Thane an apt destination.

- 📍 Eastern Express Highway - 3 Mins
- 📍 Mulund - 15 Mins
- 📍 Airoli - 25 Mins
- 📍 Powai - 30 Mins
- 📍 Ghansoli - 30 Mins
- 📍 Mahape - 32 Mins
- 📍 BKC - 35 Mins
- 📍 Vashi - 35 Mins
- 📍 Andheri - 40 Mins
- 📍 SEEPZ - 40 Mins
- 📍 Kalyan - 40 Mins
- 📍 Borivali - 45 Mins
- 📍 Chhatrapati Shivaji International Airport - 45 Mins
- 📍 Goregaon - 50 Mins
- 📍 Nerul - 55 Mins
- 📍 Fort - 60 Mins
- 📍 Parel - 60 Mins
- 📍 Panvel - 65 Mins

Source: Google Maps. As per Normal Traffic Conditions.

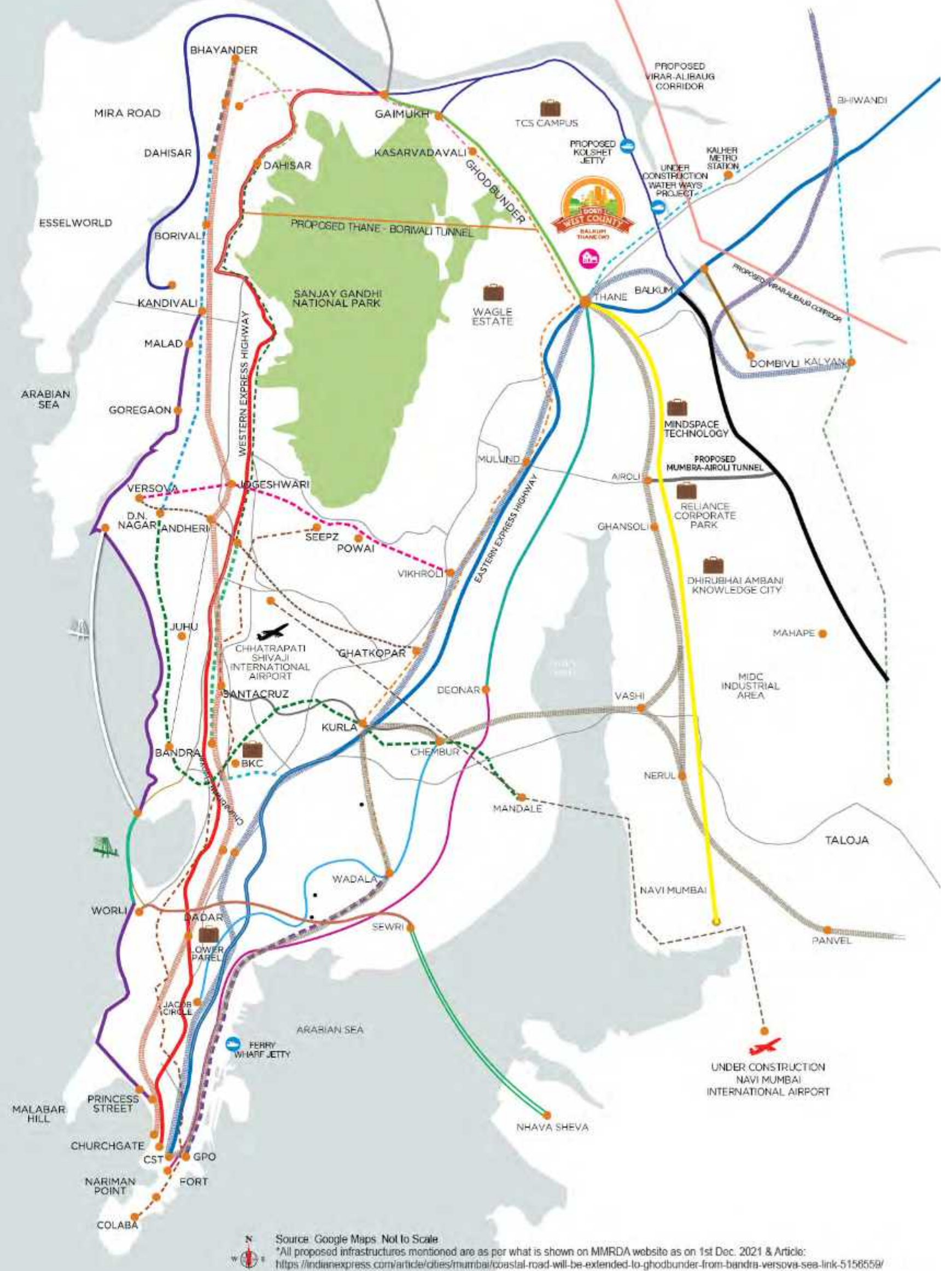
- ✈️ Airport
- 🛣️ Eastern Express Highway
- 🛣️ Western Express Highway
- 🛣️ Ghodbunder Road
- 🛣️ Old Mumbai-Pune Road (NH 4)
- 🛣️ Thane-Belapur Road
- 🚇 Chembur - Jacob Circle Monorail Line
- 🚇 Santacruz - Chembur Link Road
- 🛣️ Eastern Freeway
- 🚢 Bandra - Worli Sea Link
- 🏢 Business Hub
- 🚇 Ghatkopar - Versova Metro Line 1
- 🚆 Western Railway
- 🚆 Central Railway
- 🚆 Harbour Railway
- 🚢 Ferry Wharf Jetty

UNDER CONSTRUCTION INFRASTRUCTURE

- 🚇 DN Nagar - Dahisar Metro Line 2A
- 🚇 DN Nagar - Bandra - Mandale Metro Line 2B
- 🚇 Colaba - Bandra - Seepz Metro Line 3
- 🚇 Wadala - Ghatkopar - Thane Metro Line 4
- 🚇 Thane - Bhiwandi - Kalyan Metro Line 5
- 🚇 Swami Samarth Nagar - Jogeshwari - Vikhroli Metro Line 6
- 🚇 Andheri (E) - Dahisar (E) Metro Line 7
- 🚇 Dahisar (E) - Mira Bhayandar Metro Line 7A
- 🚇 CSIA - Navi Mumbai International Airport Metro Line 8
- 🚇 Dahisar (E) - Mira Bhayandar Metro Line 9
- 🚇 Wadala - GPO (CST) Metro Line 11
- 🛣️ Mumbai Coastal Road
- 🛣️ Mumbai Trans Harbour Link (Sewri - Nhava Sheva)
- ✈️ Navi Mumbai International Airport
- 🚢 Thane Water Ways Transport Along Ulhas River (Thane to Vasai, Kalyan & Bhiwandi)

PROPOSED INFRASTRUCTURE

- 🚇 Thane - Borivali Tunnel
- 🚇 Virar - Alibaug Multi-modal transport Corridor
- 🚇 Thane - Dombivli Flyover
- 🚇 Mumbra - Airoli Tunnel
- 🚇 Metro Line 10 Gaimukh (Ghodbunder) - Shivaji Chowk (Mira Road)
- 🚇 Metro Line 12 Kalyan - Talaja
- 🚢 Kolshet Jetty
- 🚢 Bandra - Versova Sea Link
- 🛣️ Coastal Road from Kandivali to Ghodbunder Road
- 🛣️ Worli to Sewri connector
- 🛣️ Eastern Freeway (Chembur to Thane)
- 🛣️ Coastal Road (Balkum to Gaimukh)



Source: Google Maps. Not to Scale.
 *All proposed infrastructures mentioned are as per what is shown on MMRDA website as on 1st Dec. 2021 & Article: <https://indianexpress.com/article/cities/mumbai/coastal-road-will-be-extended-to-ghodbunder-from-bandra-versova-sea-link-5158559/>



PERFECT LOCATION TO RESIDE SOME OF THE PROMINENT PLACES IN THANE

EDUCATIONAL INSTITUTES

CP Goenka International School.....	3 Mins
Nett Paramedical College.....	9 Mins
St. Xaviers English High School & Jr. College.....	10 Mins
Rustomjee Cambridge School.....	10 Mins
Lodha World School.....	12 Mins
Vasant Vihar School.....	13 Mins
TMC Law colleges.....	14 Mins
Orchids International school.....	15 Mins
Universal High School.....	15 Mins
Rainbow International School.....	15 Mins
Smt. S. Singhania High School.....	15 Mins
Vidya Prasarak Mandal's Polytechnic.....	18 Mins
Hiranandani Foundation School.....	18 Mins
Billabong High International School.....	20 Mins

PUBLIC PARKS

Under Construction Grand Central Park.....	1 Min
Jogger's Park.....	14 Mins
Ovalekar Wadi Butterfly Garden.....	20 Mins
Nature Information Centre, Manpada.....	20 Mins

MULTI-SPECIALITY HOSPITALS

Jupiter Hospital.....	8 Mins
Bethany Hospital.....	10 Mins
Hiranandani Hospital.....	15 Mins
Horizon's Hospital.....	15 Mins
Life Care Hospital.....	15 Mins

LAKES & WATERFRONTS

Rewale.....	5 Mins
Makhmali.....	15 Mins
Upvan.....	15 Mins
Masunda.....	18 Mins

AMUSEMENT & WATER PARKS

Tikuji-ni-Wadi.....	12 Mins
Suraj Water Park.....	15 Mins

FINE DINING RESTAURANTS

Clove Bar & Kitchen.....	7 Mins
Mainland China.....	8 Mins
Barbeque Nation.....	10 Mins
China Bistro.....	10 Mins
Oriental Spice.....	10 Mins
The Yellow Chili.....	10 Mins
Urban Tadka.....	12 Mins
Fusion Dhaba.....	20 Mins

MALLS AND HYPERMARKETS

Laka City Mall.....	2 Mins
Big Bazaar.....	3 Mins
High Street Mall.....	3 Mins
D Mart.....	8 Mins
Star Bazaar.....	10 Mins
R Mall.....	10 Mins
Viviana Mall.....	10 Mins
Hypercity.....	15 Mins
Korum Mall.....	15 Mins
The Walk.....	15 Mins

MULTIPLEXES & THEATRES

Kala Bhavan.....	2 Mins
Cinema Star.....	2 Mins
Cinemax.....	7 Mins
Cinopolis.....	10 Mins
Dr. Kashinath Ghanekar Auditorium.....	15 Mins
Gadkari Rangayatan.....	20 Mins

THE FUTURE SHINES BRIGHT FOR THANE

Known as the city of lakes and opportunities, Thane is witnessing increased interest from home buyers due to its good infrastructure and great connectivity in the Mumbai Metropolitan Region. Being situated amidst nature, Thane is a city with sprawling flyovers, highways and wide roads. It boasts of impressive residential and social infrastructure. From housing complexes, commercial developments and IT parks to malls and multiplexes, to schools, hospitals, river fronts, lakes, hills, forests, parks, etc. Thane has it all. And the next chapter in its growth story is indisputably Balkum, the new emerging destination. Making it the perfect home to the residential hub that is Dosti West County.

Thane is destined to become an elite, modern city with all the facilities and connectivity that one would require. Many commercial spaces have come up on Ghodbunder Road and IT Parks in Wagle Estate leading to a host of employment opportunities. This has resulted in large scale residential development as well, thereby making Thane's future shine bright.

A HOME FOR ALL IS NO LONGER A DREAM

A real indicator of growth are the number of homes added and the amount of homes sold. As per CREDAI MCHI Report Sept 2021, 69,434 homes (primary + secondary) were sold in 2020 and 76,715 homes more were sold from Jun - Aug 2021 in the Thane district. These figures stand proof to Thane being the preferred destination for budding home buyers.

Thus, better connectivity, good infrastructure and natural attractions like Yeoor Hills and Thane Creek are the key drivers that attract a steady flow of home seekers. With a vast number of IT companies and commercial establishments making it their base, Thane is the ideal location which offers the perfect work-life balance.

Source: CREDAI - MCHI - CRE Matrix Research.

AIR QUALITY INDEX

With the amount of lakes and greenery within Thane, it has without a doubt one of the best AQI in the state. One of the many reasons that makes Thane one of the ideal living destinations.

Source: <https://air-quality.com/>
Link: <https://air-quality.com/place/india/thane> Date: 30/11/2021



THANE-THE CITY OF DREAMS

PREFERRED DESTINATION FOR THE SMART BUYER

The growth of a place is defined by the number of people who wish to settle in that place. Thane is a perfect example of this analogy. Thane's population has risen exponentially between 2011-2021 due to a shift of commercial business districts, better social infrastructure, large residential developments with lifestyle amenities and attractive prices. Today, Thane is a magnet for migrants and an aspiration destination for the middle class. This huge influx is a clear sign of people considering Thane as the next growth zone.



Source: census 2011 <http://www.census.gov> <https://timesofindia.indiatimes.com> - City News - Mumbai News

THANE-THE CITY OF GROWTH

GROWTH KNOWS NO BOUNDS

Thane has many advantages to its credit. One of it is the high potential for job generation. Around 4 lakh new jobs are expected to be generated in the region within the next 5 years. Many reputed companies like TCS, Amazon, etc. have settled here and more are setting up their base. TCS a reputed IT brand has established its largest office base off Ghodbunder Road, with a capacity of 30,000 employees over an area of 2 million sq. ft. Thane-Belapur Industrial Belt which is home to over 3,000 industrial units that employ over a lakh persons, is just a few kilometres away; these include IT parks and SEZ like such as Mindspace, Reliable Tech Park, MBP, Siemens, Reliance Corporate Park and many more. Adding to this the availability of quality homes in abundance, the rapid infrastructure development, quality entertainment avenues and enviable green spaces further acts as a magnet for work force to come and settle in Thane. This, in turn, will further aid in residential growth and result in price appreciation.

Source: Times of India dated Nov 6, 2019
Link: http://timesofindia.indiatimes.com/article/show/71933666.cms?utm_source=contentinterest&utm_medium=text&utm_campaign=cppt

Stock image used for representational purpose only.

CHERISH THE GOODNESS OF A COUNTY AND ACCESSIBILITY OF A CITY

LOCATION HIGHLIGHTS

- PROPOSED BALKUM METRO STATION
- PROPOSED THANE-BORIVALI TUNNEL
- PROPOSED THANE-DOMBIVALI BRIDGE
- PROPOSED VIRAR ALIBAUG MULTI-MODAL TRANSPORT CORRIDOR
- PROPOSED RO-RO WATERWAYS
- PROPOSED CST-THANE UNDERGROUND RAILWAY LINE
- PROPOSED THANE WATERWAYS
- PROPOSED EASTERN FREEWAY (CHEMBUR TO THANE)
- PROPOSED COASTAL ROAD (BALKUM TO GAIMUKH)



Actual Image

AN EXCITING LIFE IS AROUND THE CORNER

GRAND CENTRAL PARK

Enjoy a lovely day out in the sun with your family at Grand Central Park, which is under construction and less than 1 min away from Dosti West County.

VIVIANA MALL-THANE

Thane is known for its upcoming social infrastructure especially the large number of malls in and around the vicinity. They offer quality recreational activities and entertainment with wide choices of brands, culinary options and high-end shopping experience. Viviana mall one of the biggest and most famous mall is also situated here.

MUMBAI UNIVERSITY-THANE SUB-CAMPUS

Get the best of education from reputed institutes placed close to your humble nest at Dosti West County.

ISKCON TEMPLE

Discover inner peace and tranquility at the Iskcon Temple proposed in the vicinity of Dosti West County.



Stock Image

Stock Image

Stock Image



Source: MMRDA Website Dated Feb 20, 2020
 Link: <https://mmrda.maharashtra.gov.in>

UNDER CONSTRUCTION & PROPOSED METRO LINES

METRO LINE 5 WITH BALKUM STATION

The under construction Metro Line 5 connects Thane - Bhiwandi - Kalyan and will help ease traffic congestion along this corridor. The upcoming Balkum metro station is just a minute away from Dosti West County.

METRO LINE 4

This under construction Metro Line 4 connects Wadala - Ghatkopar - Mulund - Thane - Kasarvadavali thereby reducing travel time between the south central and northern central locations.

PROPOSED METRO LINE 10

Metro Lines 10 Gaimukh to Shivaji Chowk is expected to provide connectivity between Mira-Bhayandar and Thane.



Source: The Economic Times - [https://economictimes.indiatimes.com/news/politics-and-nation/mmrda-plans-rs-11235-crore-underground-road-connecting-borivali-and-thane/articleshow/84448725.cms?&](https://economictimes.indiatimes.com/news/politics-and-nation/mmrda-plans-rs-11235-crore-underground-road-connecting-borivali-and-thane/articleshow/84448725.cms?)

PROPOSED THANE BORIVALI TUNNEL

This 10 km long tunnel will start from Tikujji-ni-wadi (Thane) and connect with the Western Express Highway at Borivali passing through Sanjay Gandhi National Park.



Source: Times of India Dated Aug 11, 2020
 Link: <https://timesofindia.indiatimes.com/city/thane/thane-mothajoon-markoli-bridge-work-on-ulhas-creek-to-be-completed-in-next-15-months-says-mmrda/articleshow/77490436.cms>

PROPOSED THANE-DOMBIVLI BRIDGE

This six-lane bridge over the Ulhas creek is 980 metres long and will connect Thane & Dombivli via the Nashik highway.



Source: Indian Express dated Jun 22, 2021
 Link: <http://indianexpress.com/article/cities/mumbai/mumbai-green-nod-to-election-of-virar-alibaug-multi-modal-corridor-project-7369564/>

PROPOSED VIRAR ALIBAUG MULTI-MODAL TRANSPORT CORRIDOR

The first phase of the project is a 79 kms stretch between Virar and Balavali. And the second stretch between Balavali to Alibaug is 47 kms. This corridor will have 72 bridges, 21 flyovers, 2 over passes and 35 vehicular underpasses thus cutting down travel time between Virar and Alibaug by approximately 50%. It is also expected to provide easy access to upcoming Navi Mumbai International Airport and Jawaharlal Nehru Port & Mumbai Trans Harbour Link.



Source: Hindustan Times Nov 16, 2021
 Link: <https://www.hindustantimes.com/cities/mumbai-news/eastern-freeway-to-be-extended-from-chembur-to-thane-101637066472405.html>

PROPOSED EASTERN FREEWAY EXTENSION FROM CHEMBUR TO THANE

A freeway connecting two major centre points of the city. This will enable a seamless flow of traffic and reduction in bottlenecks along with swift connectivity.



Source: Free Press Journal Nov 18, 2021
 Link: <https://www.freepressjournal.in/mumbai/mumbai-mmrdagets-approval-for-crucial-infra-projects>

PROPOSED COASTAL ROAD FROM BALKUM TO GAIMUKH

Approval has been granted to construct this coastal road connecting Gaimukh and Balkum. This will reduce the travel time into mere minutes and avoid traffic on the main highway.



Source: Times of India dated July 25, 2019
 Link: <https://timesofindia.indiatimes.com/city/mumbai/railways-moots-underground-cst-thane-ride-in-21-minutes/articleshow/70373109.cms>

PROPOSED CST-THANE UNDERGROUND RAILWAY LINE

The railways have proposed a 34 kms fully underground high-speed route between Chhatrapati Shivaji Maharaj Terminus (CSTM) and Thane that will run under the current corridor and is expected to half the commuting time.



Source: Times of India dated July 18, 2019
 Link: <https://timesofindia.indiatimes.com/city/thane/thane-plans-waterways-by-october/articleshow/70271330.cms>

THANE WATERWAYS

The first phase of the inland water transport project that will connect Thane, Kalyan and Vasai thus reducing the strain on the roads and railways in those areas.



Source: BusinessWire India, article dated 1st Oct 2019
 Link: <https://www.businesswireindia.com/hovercraft-likely-scnpt-watertransport-success-story-mumbai-ci-niranjan-hiranandani-65132.html>

PROPOSED RO-RO WATERWAYS

This would be a hovercraft service between South Mumbai and Navi Mumbai in Phase 1 with plans to extend the same to Thane in Phase 2. This is expected to be a cost effective transport solution which will help ease road and rail traffic congestion within MMR.

All stock images used for representational purpose only.



DOSTI NEST

1 BHK HOMES

INTRODUCING

AN ALL-INCLUSIVE LIFESTYLE TO ELEVATE YOUR LIFE

Embrace a life of fulfilment at Dosti Nest. These 1 BHK Residences are smartly planned with intelligent use of space to provide you maximum comfort. Nestled between the pleasant environment of Dosti West County and its comprehensive lifestyle, you are sure to elevate your standard of living to a whole new level.



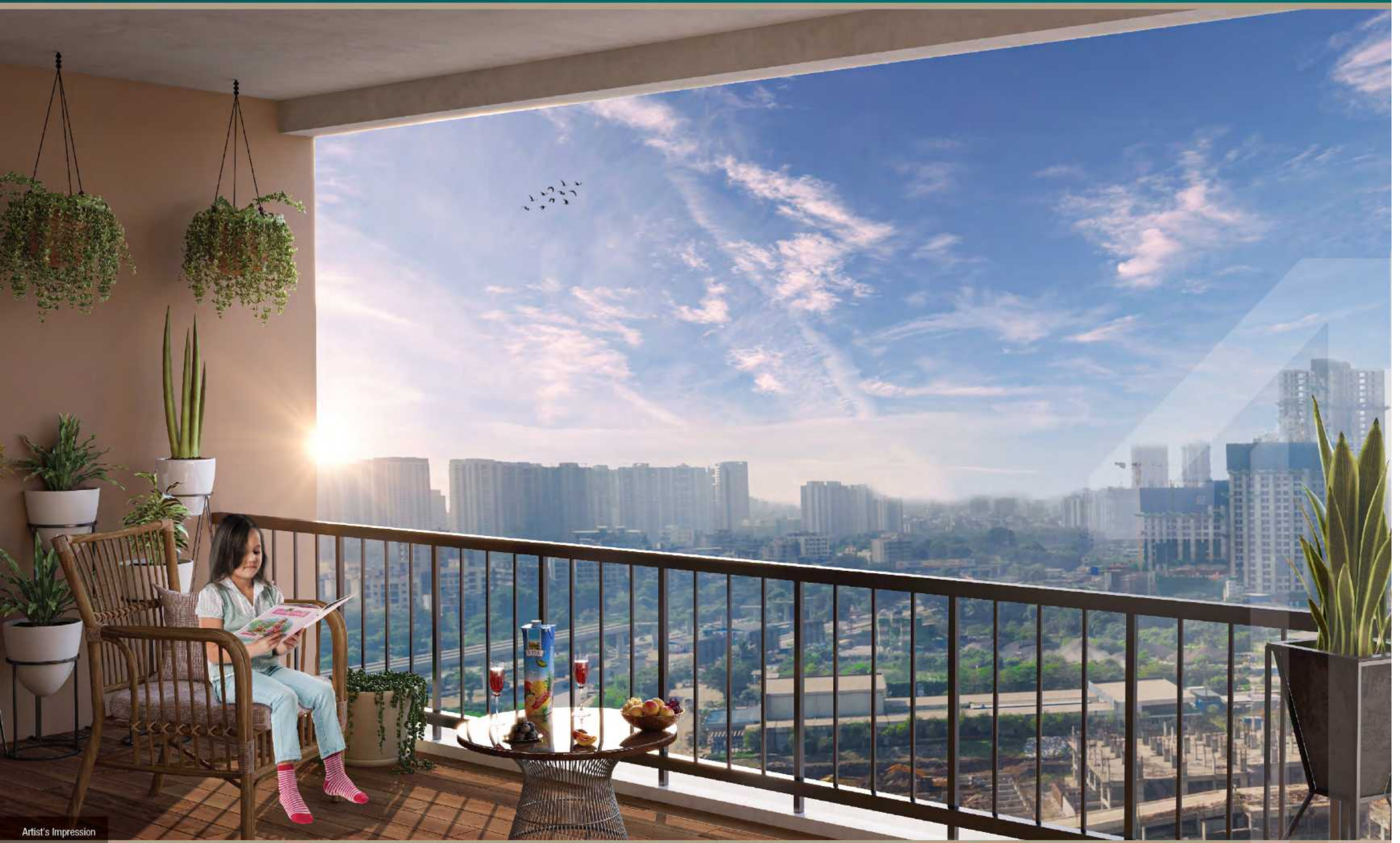
PROJECT HIGHLIGHTS

- Located at Balkum in the heart of Thane
- 1 BHK (Smart, Spacia, Luxe) Homes
- 3 Towers within. Dosti West County - Dosti Nest - Phase 1 (Dosti Merlin) is 37 Storeys & Dosti West County - Dosti Nest - Phase 2 (Dosti Dove - Wing A) is 32 Storeys
- Expansive ground and podium garden of approx. 37,749 sq. ft.* (3,507 sq. mt.) with activity areas for all age groups
- Dosti Club Nest with amenities catering to various preferences
- Power backup for common areas
- 4 Podium levels with surface parking. Limited mechanical parking.
- Superior safety and security
- Environment friendly design
- 770+ number of trees within Dosti West County - Dosti Nest (Sector 3)
- Opposite a park of approximately 3 acres
- Under construction Metro Line 5 Balkum station just 1 min away
- Good social infrastructure like schools, shopping, hospitals etc. in the vicinity
- 1,300+ Trees in Dosti West County - Sector 1 & 120+ Trees in Dosti West County - Dosti Tulip (Sector 2)

*Conversion in square feet for convenience & easy understanding



Artist's Impression



Artist's Impression



EuroSchool
Discover Yourself

At EuroSchool, all initiatives and energies are focused on fostering a schooling ecosystem that delivers the joy of learning to every child through highly trained teachers. Their balanced schooling philosophy and use of innovative teaching methods enable every child to become the best version of themselves. They follow an approach where children are encouraged to acquire knowledge through their own experiences, allowing them to realise their strengths and making them self-reflective learners. The institution is built on the fundamentals that great quality teaching shapes the right characteristics in a child.

Highly motivated teachers follow a personalized approach to help realise each child's goals and true potential and work hard to create a great schooling experience. EuroSchool is also the first school to get a safe school certification from a global audit firm, Bureau Veritas. Their student centric learning practices include: National Education Policy (NEP) 2020 powered curriculum, a personalized learning enabled digital learning ecosystem (ARGUS), a specially designed teacher training program for enhancing the skills of their highly passionate teachers and EuroBridge, a preparatory course for toddlers for the new academic year.

EuroSchool will be located at Dosti West County in Balkum, Thane (W).



Artist's Impression



Artist's Impression

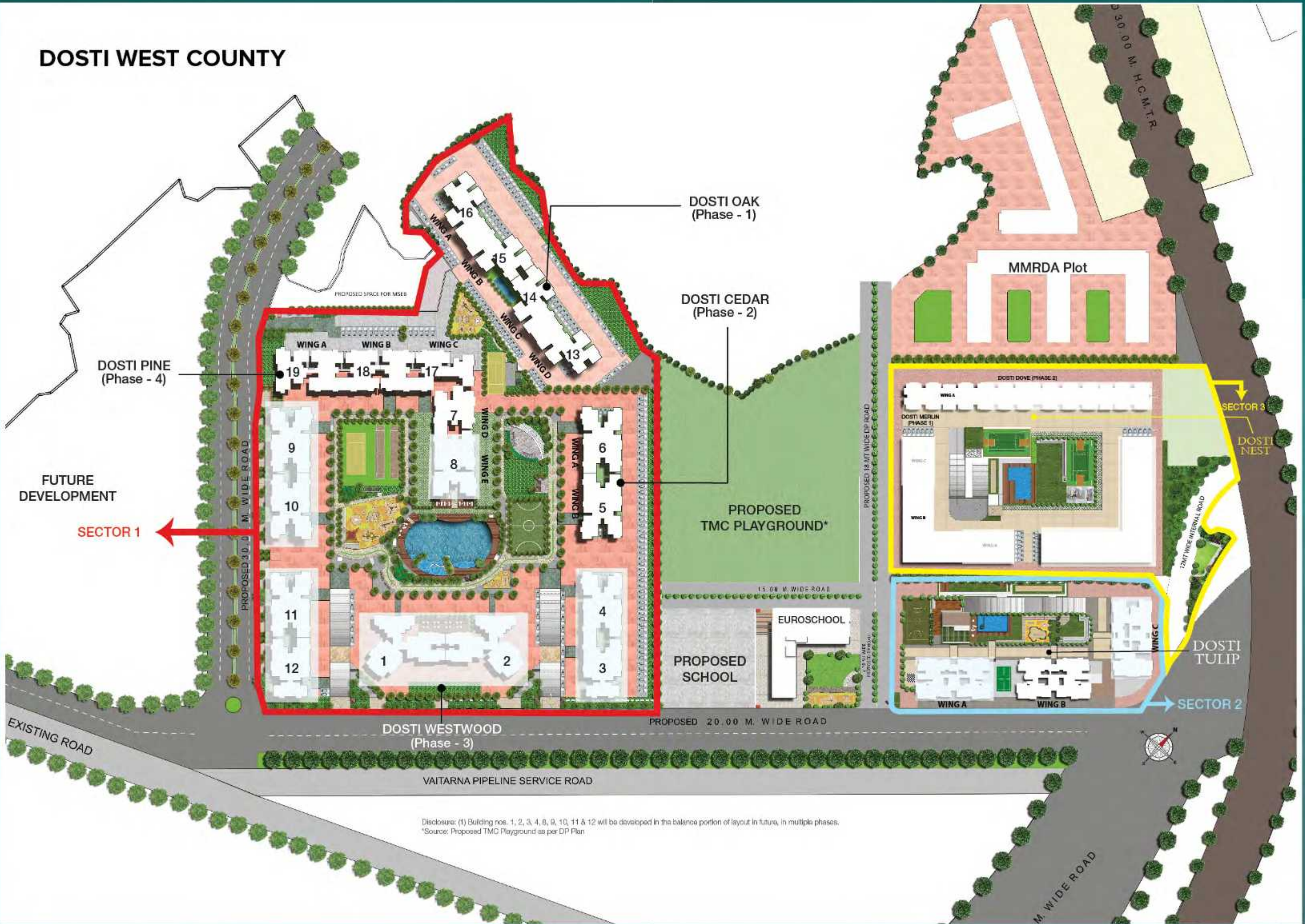


Artist's Impression



Artist's Impression

DOSTI WEST COUNTY



Disclosure: (1) Building nos. 1, 2, 3, 4, 8, 9, 10, 11 & 12 will be developed in the balance portion of layout in future, in multiple phases.
 *Source: Proposed TMC Playground as per DP Plan

DOSTI WEST COUNTY - DOSTI NEST

- | | |
|----------------------|--------------------|
| 1 Swimming Pool | 9 Party Lawn Area |
| 2 Kid's Pool | 10 Badminton Court |
| 3 Pool Deck Area | 11 Outdoor Gym |
| 4 Jogging Path | 12 Box Cricket |
| 5 Multipurpose Lawn | 13 Clubhouse |
| 6 Kid's Play Area | 14 Nature Trail |
| 7 Multipurpose Court | 15 Resting Plaza |
| 8 Amphitheatre | 16 Yoga Area |



SECTOR 3
DOSTI NEST

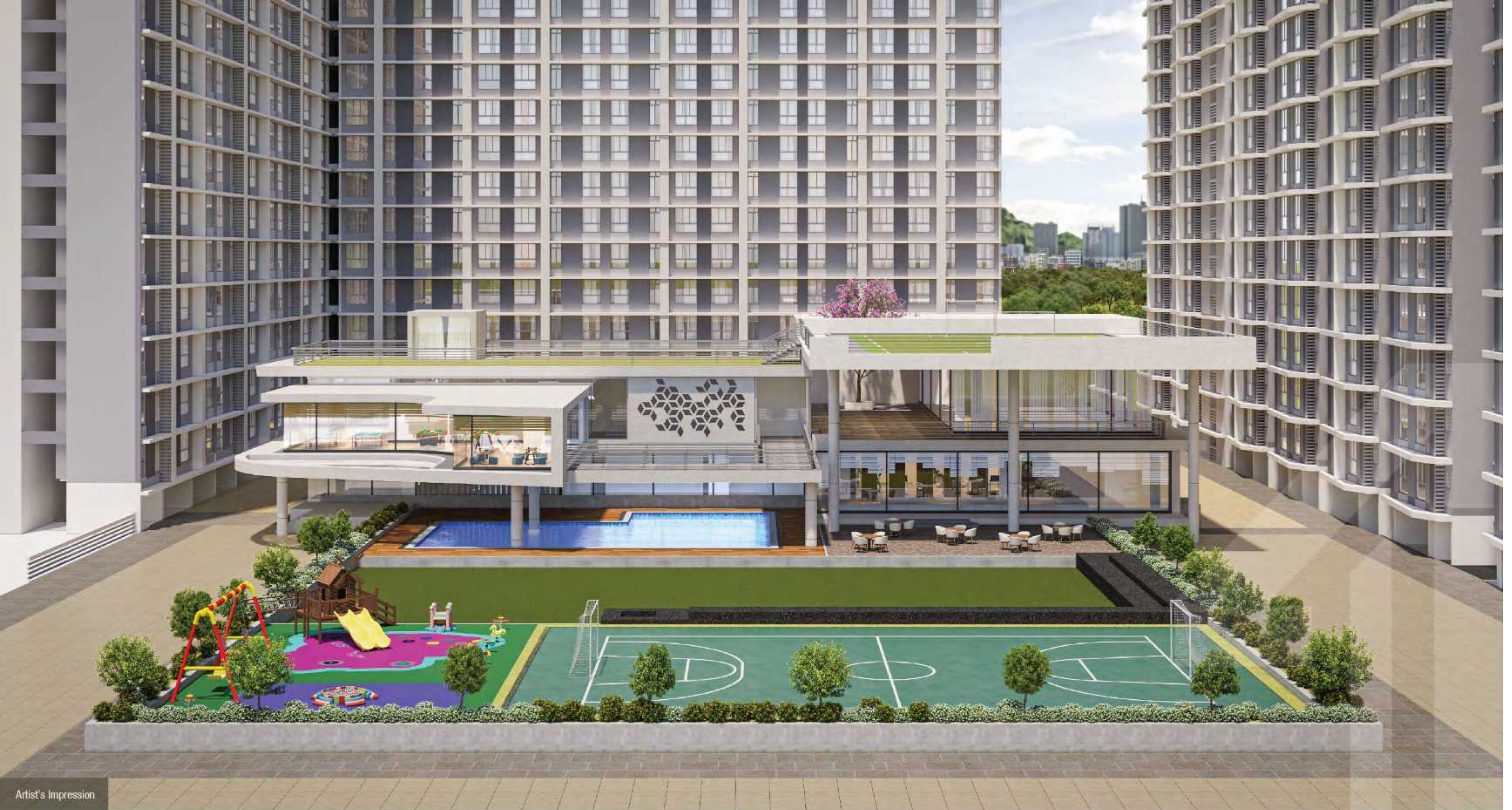
CHERISH SPARKLING MOMENTS TO ENHANCE YOUR DAILY LIFE

OUTDOOR AMENITIES

- SWIMMING POOL & POOL DECK AREA
- KID'S POOL
- JOGGING PATH
- OUTDOOR GYM
- KID'S PLAY AREA
- AMPHITHEATRE
- MULTIPURPOSE LAWN
- RESTING PLAZA
- YOGA AREA
- MULTIPURPOSE SPORTS COURT
- NATURE TRAIL
- BOX CRICKET
- BADMINTON COURT
- PARTY LAWN AREA

CLUBHOUSE AMENITIES

- MULTIPURPOSE HALL
- GYMNASIUM
- ZUMBA ROOM
- LIBRARY
- CONFERENCE ROOM
- TABLE TENNIS & SNOOKER ROOM
- CARROM & CHESS ROOM



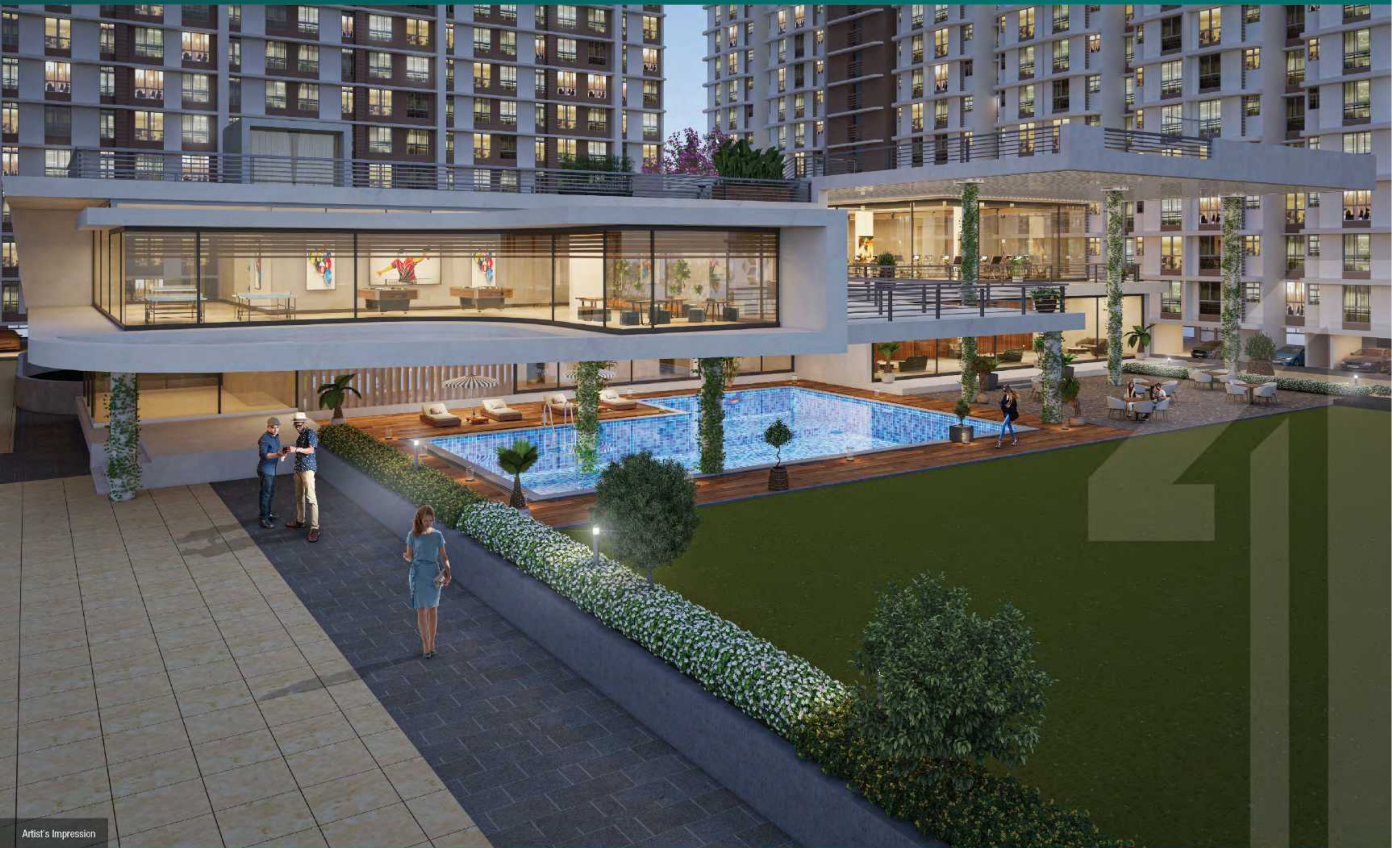
Artist's Impression

LAVISH EXPERIENCES NESTLED AMONG A GRAND AMBIANCE

Get ready to indulge in great family time with a plethora of finely crafted lifestyle amenities. Age will be just a number because here you will something for everyone to cherish.



Artist's Impression



Artist's Impression



Artist's Impression





**GREAT FAMILY TIME
NESTED IN FINE
INDULGENCES**



SWIMMING POOL & POOL DECK AREA - Stock Image

KID'S POOL - Stock Image

MULTIPURPOSE COURT - Artist's Impression



KID'S PLAY AREA - Artist's Impression



JOGGING PATH - Stock Image



RESTING PLAZA - Stock Image



BADMINTON COURT - Stock Image



MULTIPURPOSE LAWN - Stock Image



AMPHITHEATRE - Stock Image



YOGA DECK - Stock Image



BOX CRICKET - Stock Image



OUTDOOR GYM - Stock Image



NATURE TRAIL - Stock Image



MULTIPURPOSE HALL - Stock Image



GYMNASIUM - Stock Image

**INDULGENCES OF THE
GREATEST LEISURE, INDOORS**



LIBRARY - Stock Image



CONFERENCE ROOM - Stock Image



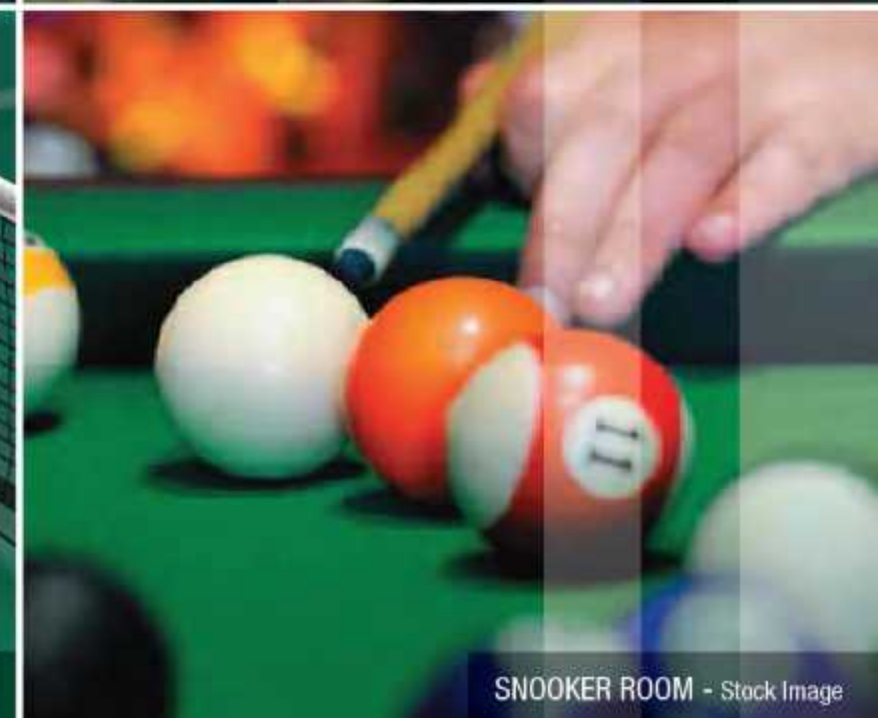
CARROM & CHESS ROOM - Stock Image



ZUMBA ROOM - Stock Image



TABLE TENNIS - Stock Image



SNOOKER ROOM - Stock Image

DOSTI WESTWOOD PHASE 3 - SECTOR 1



Artist's Impression

RESTAURANT

A restaurant with the finest cuisines just a few steps from home.



Artist's Impression

GUEST ROOMS

10 Beautifully decorated guest rooms available to book, for when you have visitors over.



Stock Image

BANQUET HALL

Two large indoor halls to hire, so you can be the host your guests deserve.



Stock Image

AV ROOM

Experience entertainment at a whole new level in our audio visual room which you can hire at any time.



Stock Image

Disclosure: Dosti West County – Dosti Westwood (Phase-3) comprises of a Restaurant, Banquet, AV Room & Guest Rooms proposed to be developed below building nos. 1 & 2. The Promoter reserves their right to sale, assign, transfer, convey, lease, rent out, encumber or deal with all or any of the Units in the Dosti Westwood, at their sole discretion. The said Units of Dosti Westwood are not common areas or facilities of Dosti West County project. The Promoter reserves their right to allow the use and enjoyment of all or any of the Units to the residents of Dosti West County project and/or outsiders, at such rent fees, cost or charges and subject to such terms and conditions as the Promoter may in their sole discretion deem fit and proper.

MOVE UP IN EVERY ASPECT WITH MODERN FEATURES

TOWER SECURITY

- SECURITY ACCESS CONTROL
- SECURITY SYSTEMS
- FIRE ALARM
- SAFETY POINT



THE SECRET TO SAFER & GREENER HOMES

- Solar Panels: Optimum use of Solar Energy for hot water, garden and street lights
- LED Lights: Efficient designing of Lighting systems and use of efficient fixtures to reduce total energy demand in common areas like the entrance lobby, garden, pathway, podium and parking areas
- Energy Saving Appliances: Energy saving appliances and equipment used in the premises
- Maximum Natural Ventilation: Homes at Dosti West County have been designed to provide maximum natural ventilation to maintain indoor air quality
- Low VOC Paints: At Dosti West County, we use low VOC paints to reduce the adverse health impact for residents
- Rainwater Harvesting System: At our rainwater harvesting system at Dosti West County, the water collected will be used for gardening purposes
- Water Efficient Fixtures: Water efficient fixtures and flushing system are used in toilets and kitchens to reduce water consumption
- Recycling of Water: Recycling of water for flushing and gardening through state-of-the-art sewage treatment plant
- Native Plant Species for Landscaping: Use of native plant species for landscaping which will reduce water demand and maintain bio-diversity
- Waste Management: Centralised garbage disposal system and garbage waste management system to reduce the load on the civic infrastructure
- Promoting a Health Conscious Environment: Swimming pool and various sports activities to promote a health conscious environment
- Disabled-friendly Access System: All buildings at Dosti West County are equipped with disabled-friendly access ramps.

SECURITY ACCESS CONTROL

With CCTV cameras and monitors in place for the surveillance of the premises, your safety is never in question.

FIRE ALARM

Fire Alarms in common areas and sprinkler systems in every apartment.



SECURITY SYSTEMS

There would be superior security systems like Intercom, Access Control Cards and CCTV provision at the podium and main entrance lobby.

SAFETY POINT

The latest Gas Leak Sensors will be installed in the apartments.

Stock Image

Stock Image

Stock Image

Stock Image

Stock Image

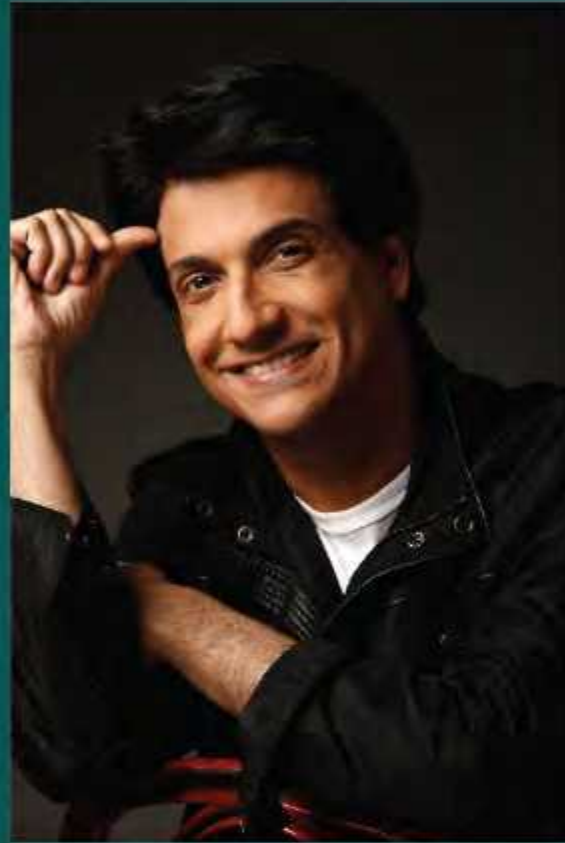
Stock Image

Stock Image

Stock Image

TIE-UPS

SHIAMAK DAVAR'S INSTITUTE FOR PERFORMING ARTS



SHIAMAK

Have feet. Will dance.

SHIAMAK™ is one of the most respected international brands in the arena of dance training, epitomizing dance and promoting dance education on the global pedestal. SHIAMAK has been imparting dance education for close to three decades and is growing from strength to strength, teaching dance to people of all age groups and from every walk of life with their motto, "Have Feet. Will Dance". Helmed by National Award winning choreographer, singer & performer – Shiamak Davar, the institute now has presence in 5 countries across 3 continents, educating and empowering thousands of individuals every year. SHIAMAK dance classes are open to anyone and everyone, starting from the age of 2 years and going up to 84 years. Their programs include Dance For Toddlers, SHIAMAK Summer / Winter Funk, Advanced Training Batch (ATB) – The Advanced Training Batch and Samplers/Workshops.

Residents will be able to enroll at Shiamak Davar's Institute for Performing Arts on payment of applicable fee and once the classes commence.

SURESH WADKAR'S AJIVASAN MUSIC ACADEMY



Ajivasan has been spreading the message of Hindustani Classical Music to thousands of students for 86 years. It has been Ajivasan's continuous endeavor to educate and spread Hindustani Music, Culture & Art across society. The students had the opportunity to perform with the master himself on several occasions. Ajivasan offers varied Music Appreciation Courses for children, adults, and youth. Ajivasan aims at spreading music education with practical and scientific methods that widen an individual's ability to use his/her potential to 100%.

These classes will be conducted in Dosti West County for Indian and Western Vocal and Instruments training. Residents will be able to avail this facility on payment of applicable fee and once the classes commence.

AWARDS AND ACCOLADES

- Dosti Eastern Bay - New Wadala awarded Iconic Residential Project of the Year South Mumbai at Times Real Estate Conclave & Awards 2021
- Dosti Oro 67 - Kandivali (W) awarded Upcoming Residential Project - Western Suburbs at the Mid-Day Real Estate International Icons Award 2021
- Dosti Eastern Bay - New Wadala awarded Iconic Residential Project South Mumbai by Hindustan Times Real Estate Titans 2020
- Dosti Eastern Bay - New Wadala won Iconic Luxury Homes - South Mumbai by Mid-Day Real Estate Icons Awards 2020
- Dosti Realty awarded Developer of the Year (Residential) at the Real Estate Business Excellence Awards, 2020 in association with CNN-News 18.
- Dosti West County Iconic Planned Project Central Mumbai 2019 - Mid-day Real Estate Icons Awards 2019
- Dosti West County awarded Iconic Planned Project Central Mumbai 2019 by Mid-Day Real Estate & Infrastructure Icons Award 2019
- Dosti West County awarded Best Project of the Year Thane in 2018 by Accommodation Times
- Dosti West County Awarded Ultimate Residential project - Thane in 2018 by Hindustan Times
- Dosti Desire Awarded Residential project of the Year Thane in 2018 by Accommodation Times
- Dosti Realty Ltd. Awarded Excellence in Quality Residential Projects by Lokmat Corporate Excellence Awards 2018
- Dosti Realty Ltd. Awarded Best Developer Residential by ET Now in 2018
- Dosti Realty Ltd. Awarded Best Green Building for Dosti Ambrosia - New Wadala by ET Now in 2018
- Dosti Realty Ltd. was awarded Real Estate Industry Achievement Award - 2017 GroheHuron
- Dosti Desire has been awarded the Iconic Residential Project, Thane - Mid-Day Real Estate Icons in 2017
- Dosti Realty Ltd. Awarded Iconic Developer Thane by Mid-Day Real Estate Icons (Thane & Navi Mumbai) in 2017
- Dosti Planet North, Shil Thane - Awarded Iconic Residential Project Beyond Thane, Mid-Day Real Estate Icons (Thane & Navi Mumbai) in 2017
- Dosti Planet North, Shil Thane - Certified as Times Realty Icons 2017 Navi Mumbai, Thane & Beyond, in the category of Value Homes (Thane & Beyond) in 2017
- Dosti Majesta, Ghodbunder Road, Thane (W) - Certified as Times Realty Icons 2017 Navi Mumbai, Thane & Beyond, in the category of Ultra Luxury Homes (Thane & Beyond) in 2017
- Dosti Ambrosia, New Wadala - Project of the Year Mumbai at the 31st National Real Estate Awards by Accommodation Times in 2017
- Dosti Ambrosia, New Wadala awarded Iconic Residential Project - South Mumbai at the Mid-Day Real Estate Icons Awards in 2016
- Dosti Ambrosia, New Wadala Certified Gold Rating under IGBC for Green Building by LEED in 2016
- Dosti Acres, New Wadala awarded 2nd place at the Exhibition for Gardening at the Veermata Jeejabai Bhosle Garden, Byculla by the Tree Authority and Brihan Mumbai Mahanagarpalika in 2015
- Dosti Ambrosia, New Wadala was awarded Best Residential Project of the Year by Construction Times in 2015
- Dosti Vihar, Thane won the Premium Apartment Project of the Year (West) by NDTV in 2015
- Dosti Realty Ltd. was ranked Mumbai's Top Developer and the Best in Indian Real Estate for on-time delivery and possession by NDTV in 2014
- Dosti Vihar, Thane was awarded Project of the Year by Accommodation Times in 2014
- Dosti Imperia, Thane is pre-certified Green Building aiming for Gold rating by LEED in 2013
- Dosti Vihar, Thane won the title of an Artist in Concrete Awards for Space Planning in Big Residential projects by REIFY Artisans & Projects Pvt. Ltd. in 2013
- Dosti Realty Ltd. became an OHSAS 18001: 2007 (in 2018) & ISO 9001:2008 (in 2012) Certified Company by URS
- Dosti Acres, New Wadala won the Best Maintained Podium Garden by the Municipal Corporation of Mumbai for 3 consecutive years from 2008 onwards
- Dosti Elite, Sion won the 3rd prize for display of class 27-B at the 13th Exhibition for plants, flowers, fruits & vegetables by Municipal Corporation of Mumbai in 2008
- Dosti Elite, Sion has also been awarded the Best Maintained Podium Garden for 3 consecutive years
- Dosti Flamingos, Parel-Sewree won the Best Maintained Landscaped Garden by the Municipal Corporation of Mumbai in 2005

THE TEAM



acipl

DESIGN ARCHITECT
ARCHETYPE CONSULTANTS (I) PVT. LTD.

Archetype Consultants (I) Pvt. Ltd. is an architectural company that offers diversified architectural design service with a multi-disciplinary approach. This is reflected in the services offered in housing, commercial educational, institutional, urban development & hospitality sectors. They follow a 'studio system' where each team provides distinctive solutions for projects and is actively involved from its inception to occupancy. They specialise in giving minute attention to the detailing of a project. ACIPL has been founded on the principle that timeless & valued architecture is a successful integration of aesthetics, practicality & functionality. With an eternal demand for a good piece of architecture, complexity has become more than an aesthetic preference. acipl recognizes that adaptability is the need of the hour. Some of their notable projects include Sapphire Hospital - Thane, Seven Square Academy, Impulse Tech Park.

Dosti Realty has been associated with ACIPL since the last 15+ years and have jointly delivered Dosti Vihar, Dosti Imperia, Dosti Planet North over the last few years with their expertise.



LANDSCAPE CONSULTANT
TAIB LANDSCAPE PVT. LTD, SINGAPORE

Taib Landscape Pvt. Ltd., Singapore brings its exceptional green fingers to Dosti West County. The diverse team of landscape architects, horticulturists and designers has been practicing landscape architecture in India and South East Asian region for over 20 years. Landscape design studio, SINGAPORE brings its exceptional green fingers to Homeland Heights. Under Ms. Saidah Taib's expertise, the studio's diverse team of landscape architects, horticulturists and designers has been practicing landscape architecture in India and South East Asian region for over 20 years. The studio has some remarkable residential and hospitality projects in Mumbai, Bangalore and Goa under its belt. Some of their notable projects include Aldeia-De-Goa Residential villa project, SEZ Hinjewadi Pune - Commercial IT development, Avaneer Hinjewadi Pune - Commercial development.

Taib Landscape and Dosti Realty friendship go way back in time from the marvelous Dosti Acres project at New Wadala in 2003. Together they have delivered Dosti Acres, Dosti Ambrosia, and Dosti Imperia over the years.



STRUCTURAL CONSULTANT
JW CONSULTANTS LLP

Started as a proprietary practice in the year 1975, it has now evolved into JW Consultants LLP. Over four decades, JW Consultants LLP has stayed true to the meticulously selected tenets of professional practice, while combining superior design and quality standards with stringent compliance. Driven by innovation, JW has created its footprint across residential, commercial, industrial, retail, institutional, hospitality, and healthcare sectors, among others in India and even Internationally. With their core strengths in technical expertise, cutting-edge software modelling and analysis tools, along with the best talent, they were able to deliver 70 million sq. ft. of space annually.

Dosti's alliance with JW is more than 8 years old wherein several projects such as Dosti West County, Dosti Planet North, Dosti Wadala project, Dosti Pune, Dosti Lower Parel are under planning, delivery, and handover stage.



MEP CONSULTANT
ENGINEERING CREATIONS PUBLIC HEALTH CONSULTANCY PVT. LTD.

It has been evolved with the specific purpose of providing a sound and reliable structure through our continuously monitored and engineered professional approach. Engaged in service contracts of expert plumbing consultancy and firefighting services for over 16 years, it endeavors to deliver within the given framework of time and constraints, an innovative technology without excessive cost overruns. They have provided their services for projects of special repute such as Nirlon Knowledge Center - Goregaon, Reliance Petroleum Ltd - Jamnagar, Bangalore Airport Expansion and other such impeccable projects.

Dosti Realty's strong partnership has been established with ECPHC since 2012 and they have delivered their expertise at Dosti Planet North and Dosti Parel.

LIAISON ARCHITECT

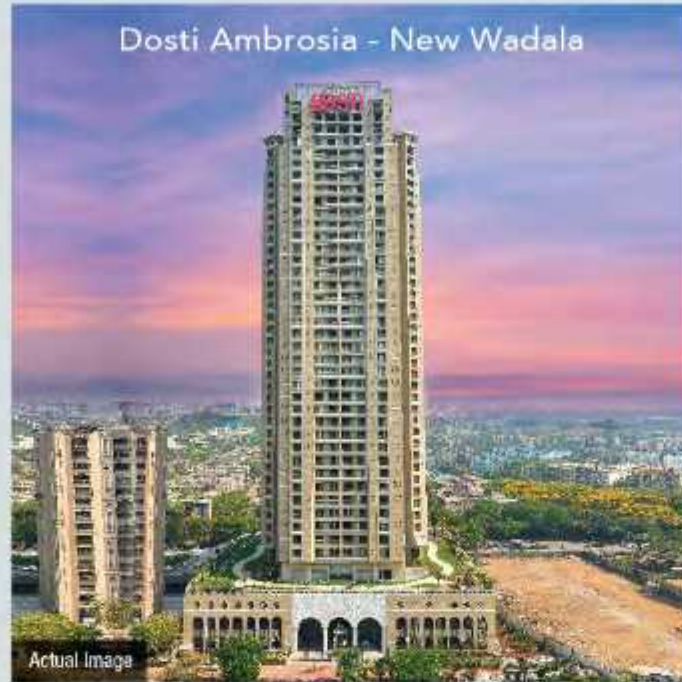
10 Folds Architects & Consultants

SOLICITORS

Vigil Juris

DISCOVER YOUR FRIENDS FOR LIFE

Dosti Realty has been in the real estate business for over 4 decades and delivered more than 126 properties till date, providing homes to over 9,700+ families. Encompassing a portfolio of having delivered over 11 mn. sq. ft. and currently constructing around 6 mn. sq. ft. across Mumbai and Thane, the company has experience in various development types, be it Residential, Retail, IT Parks, etc. Over the years, it has been known for Aesthetics, Innovation, Quality, Timely Delivery, Trust, and Transparency, Values that have built lasting relationships.







Site Address: Dosti West County, Dosti Nest, Balkum, Off Old Mumbai-Agra Road, Thane-Bhiwandi-Wadps Road, Thane (W) 400 608. T: 86577 03367

Corp. Address: Dosti Enterprises, Lawrence & Mayo House, 1st Floor, 276, Dr. D. N. Road, Fort, Mumbai 400 001 • www.dostirealty.com

Dosti West County - Dosti Oak project is registered under MahaRERA No. P51700006565, Dosti West County - Phase 2 - Dosti Cedar project is registered under MahaRERA No. P51700015258, Dosti West County - Phase 3 - Dosti Westwood project is registered under MahaRERA No. P51700015501 and Dosti West County - Phase 4 - Dosti Pine project is registered under MahaRERA No. P51700025834, Dosti West County - Dosti Tulip project is registered under MahaRERA No. P51700032666, Dosti West County - Dosti Nest - Phase 1 project is registered under MahaRERA No. P51700033640, Dosti West County - Dosti Nest - Phase 2 project is registered under MahaRERA No. P51700033663, Dosti West County - Dosti Nest - Phase 3 project is registered under MahaRERA No. P51700049724 & Dosti West County - Dosti Nest - Phase 4 project is registered under MahaRERA No. P51700050253 and are available on website - <https://maharera.tn.mahaonline.gov.in> under registered projects.



Disclosures: (1) The artist's impressions and Stock images used for representation purpose only. (2) Furniture, fittings and textures as shown/displayed in the show flat are for the purpose of showcasing only and do not form part of actual standard amenities to be provided in the flat. The flats offered for sale are unfurnished and all the amenities proposed to be provided in the flat shall be incorporated in the Agreement for Sale. (3) The right to admission, use and enjoyment of all or any of the facilities/amenities in the Clubhouse of Dosti Club Nest is reserved by the Promoters and shall be subject to payment of such admission fees, annual charges and compliance of terms and conditions as may be specified from time to time by the Promoters. (4) The sale of all the premises in Dosti West County - Dosti Nest project shall be governed by terms and conditions incorporated in the Agreement for Sale. (5) This project is funded by Kotak Mahindra Investments Limited, Kotak Mahindra Prime Limited and Kotak Mahindra Bank Limited.